

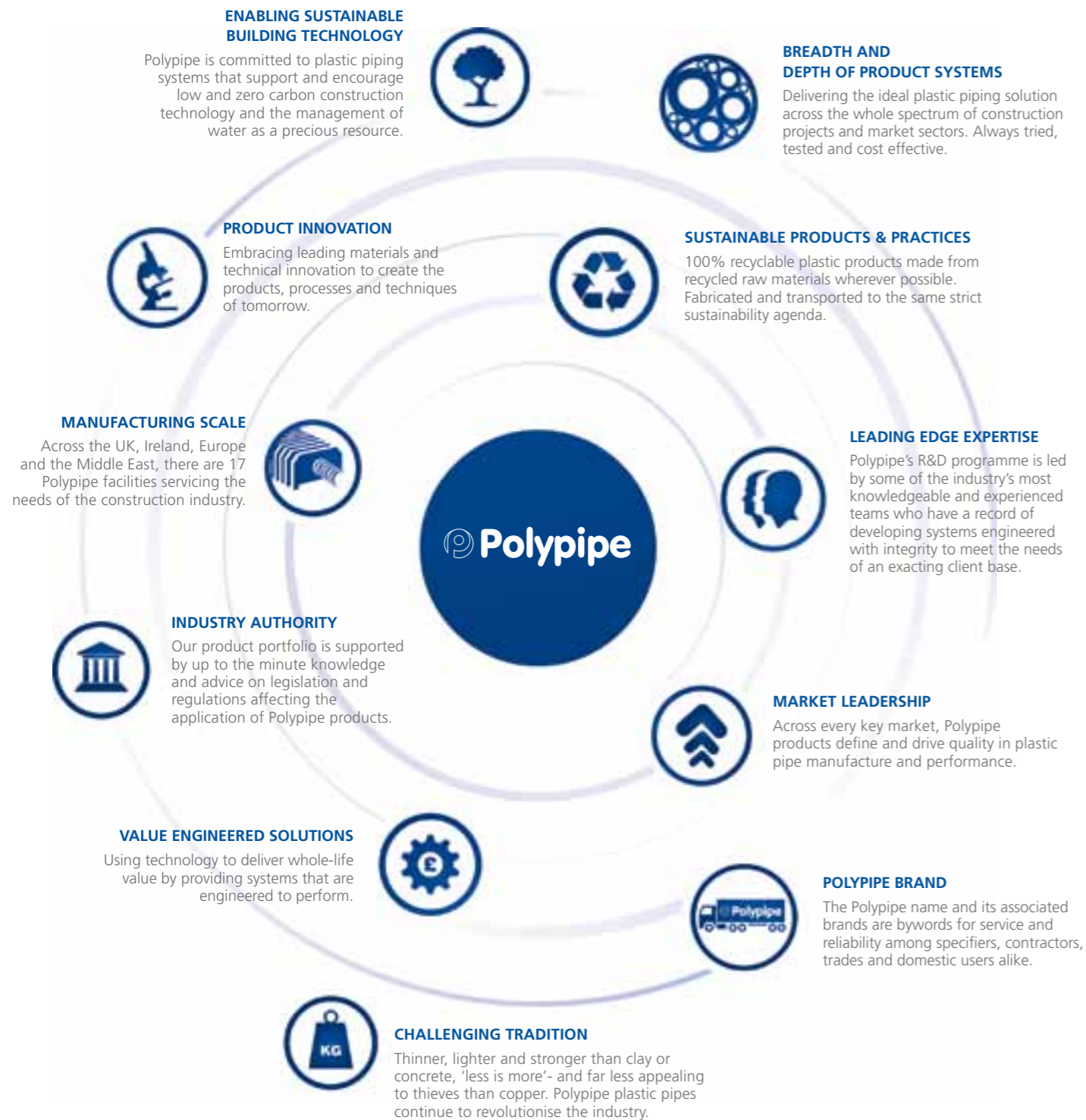
## Residential



Drainage • Water Supply • Water Management • Plumbing & Heating • Ventilation

# Polypipe

We design, develop and manufacture the widest range of plastic piping products, with over 20,000 product lines available. Our primary focus is on developing and supporting pragmatic product systems through specific knowledge and understanding of the residential, commercial, civils and infrastructure market sectors. We ensure that customers can trust our unrivalled expertise to provide value engineered, fit for purpose piping solutions for the growing diversity and complexity of construction and building technology challenges they face.



# Residential Piping Systems

As the market leader in plastic piping systems for residential development, Polypipe offers the widest range of products available, together with innovative solutions and unrivalled technical support to help our customers meet the challenges of today's construction industry.

In response to regulations that make overall performance and sustainability a condition for all new homes, residential developers are increasingly finding themselves considering 'whole house' solutions that integrate a combination of water and energy efficient products. Polypipe's extensive range of residential systems and services will help you develop an holistic approach to water conservation, water management and energy efficiency that not only allows you to satisfy the regulations, but adds real economic and ecological value to the homes you develop.



## Contents

Breadth and Depth of Product Range	4 - 5
Evolving Building Technology	6 - 7
Product Offering	8 - 9
Above Ground Drainage Systems	10 - 11
Below Ground Drainage Systems	12 - 13
Water Supply Systems	14 - 15
Water Management Solutions	16 - 17
Plastic Plumbing Systems	18 - 19
Floor Heating Systems	20 - 21
Ventilation Systems	22 - 23
Technical Expertise and Support	24 - 25
Literature	26
Polypipe Enabling Sustainable Building Technology	27

# Breadth and Depth of Product Range



Polypipe is the number one manufacturer of plastic piping solutions, with hundreds of innovative products and dozens of specialist brands bringing reliability and value to construction projects of every kind.

For residential developments, we provide a market leading range of solutions you can trust in five key areas: drainage, water supply & water management systems, plumbing & heating and ventilation.

## Availability in the market place

We are committed to supporting and sustaining a national network of merchant partners to meet the needs of the residential development market. Our integrated supply chain links manufacture, distribution and delivery in an efficient logistics solution that ensures the products you need are always available from stock or for immediate delivery to your site.

## Certification & manufacturing excellence

Polypipe leads the way in advanced plastics technology and manufacturing techniques. Our on-going investment in product development has earned our research laboratories UKAS accreditation, while our commitment to modern methods of manufacturing is just one of the reasons we have been awarded BS EN 14001 for plant processes.

## Designed to help you comply

In a climate of constantly evolving legislation, we are on your side with product solutions that help you meet the changing requirements of codes, directives and building regulations. Our technical support teams offer expert advice on these rapidly evolving and often complex requirements.

# Meeting the needs of evolving building technology

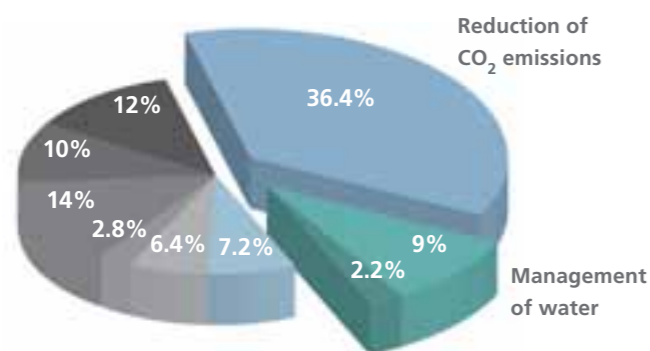
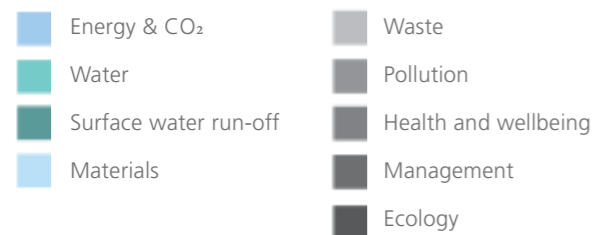
## The Code for Sustainable Homes - a national standard for the sustainable design and construction of new build housing

A Code for Sustainable Homes assessment is now required for the majority of new build housing in England, Wales and Northern Ireland and is usually required to satisfy funding or Local Authority sustainability policies. The code introduces minimum standards for energy and water efficiency based on a simple system of awarded credits. Part of this policy introduces the requirement for all new homes to be zero carbon from 2016.\*\*

\*\*Source of information: Code for Sustainable Homes 2006  
Zero carbon hub 2016 timeline available at [www.zerocarbonhub.org](http://www.zerocarbonhub.org)

### Total Available Credits

(% points contribution)



At Polypipe we have focused our development resources on providing piping solutions to enable the utilisation of building technologies aimed at the **reduction of CO<sub>2</sub> emissions** and redirection of energy usage - Carbon Efficient Solutions and the effective **management of water** - Water Management Solutions. Both are key categories in achieving the necessary standards under the Code.

## Polypipe Water Management Solutions

Surface water management and reduced water consumption are just two of the nine areas addressed by the Code, nevertheless they are two of the most critical.

Polypipe provides bespoke, cost effective solutions to help enable code compliance.



### 1. Re-use - Single dwelling

Polypipe Rainstream water re-use systems provide an effective and economical alternative to mains water in a variety of applications around the home, cutting household consumption by as much as 50% and achieving level 5-6 in WAT 1 of the Code for Sustainable Homes at a stroke.

### 2. Re-use - Multiple dwelling

In larger developments, such as social housing projects, individual dwellings can be linked to a single Rainstream tank in a manifold supply arrangement, providing for the non-potable water needs of multiple households and reducing overall installation costs.

### 3. Re-use and combined attenuation

Water re-use systems can play their own part in wider SUDS schemes, reducing flood level risk during storms by capturing run-off from paved areas. Where rainfall regularly exceeds the capacity of a Rainstream tank, it can be linked to a cellular SUDS product to form an integrated attenuation system.

### 4. Adoptable attenuation and soft SUDS systems

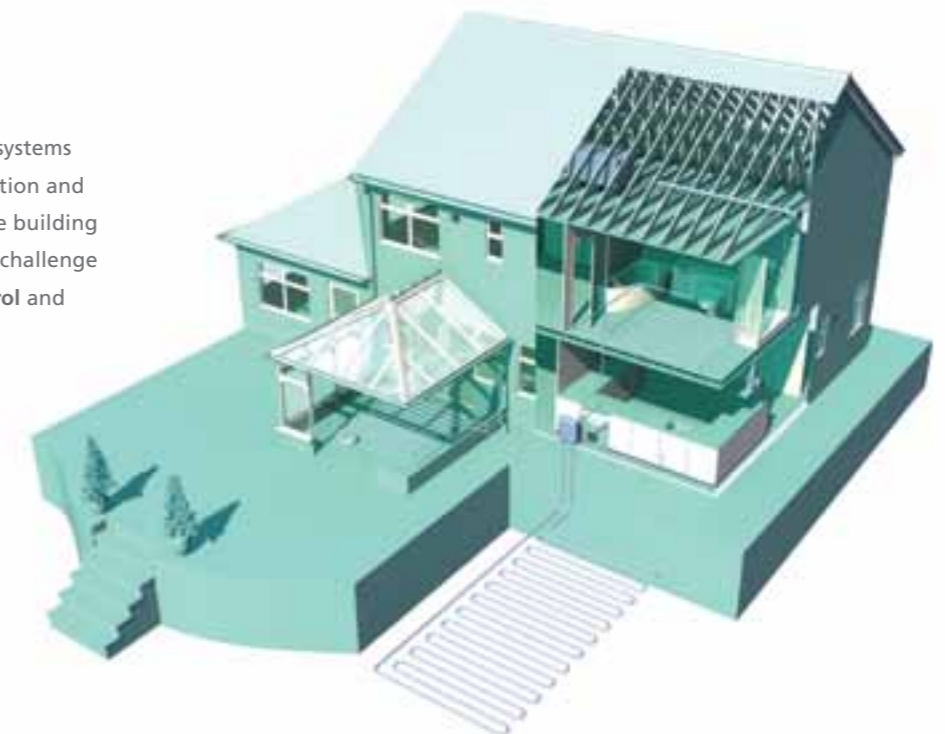
Providing a bespoke, fully accessible, below ground solution allowing the land above to be utilised. Ridgistorm-XL when linked with Storm-X4 advanced filtration system improves the quality of surface water entering the receiving water course aiding compliance with the Water Framework Directive.

## Polypipe Carbon Efficient Solutions

"The decision that new homes must be low energy/zero carbon from 2016 is very challenging. These homes will not simply be the homes we build today with extra insulation. A low energy/zero carbon home is a complex combination of systems and products which must perform as specified".\*

The move towards low energy, zero carbon homes and buildings calls for the adoption of new building technology at an unprecedented pace and scale. Complex combinations of systems and products, such as heat pumps, heat recovery and geothermal technology, require careful planning if they are to perform as specified.\*

Polypipe provides plastic piping systems that enable the effective installation and performance of these sustainable building technologies to meet the global challenge of **collection, transmission, control and emission** of energy.



\*Carbon Compliance for Tomorrow's New Homes - July 2010

# Residential Products Offering

The range of products available to developers and specifiers is holistic. From drainage and supply for homes, to heating, ventilation and water management solutions

## Above and Below Ground Drainage Pages 10-13

Systems to integrate the management of water from capture and collection to drainage, all with the ease, flexibility and strength of a light weight plastic product.

## Water Supply Systems Pages 14-15

Flexible, innovative product solutions for the delivery of mains water to residential properties and its distribution around the home. All BS EN ISO 9002 accredited to ensure the safety and security of potable water supplies.

## Water Management Solutions Pages 16-17

SUDS solutions to ease demand on local drainage networks by managing and controlling surface water in a measured process that mimics pre-development runoff rates - a central requirement of the Code for Sustainable Homes.



## Plumbing & Heating Pages 18-21

Innovative systems that meet the most demanding performance specifications for hot and cold water supply and central heating applications, plus energy efficient, underfloor heating products for new build and refurbishment.

## Ventilation Pages 22-23

High quality domestic ventilation systems, including mechanical ventilation with heat recovery, mechanical extract ventilation, intermittent extractor fans, and installer friendly engineered duct systems. All compatible in a unique 'whole house' approach to ventilation for comfort and energy efficiency within the home.



# Above Ground Drainage Systems

Polypipe provides a complete set of product systems for the safe, effective and compliant management of rainwater and waste water above ground



## Soil and vent systems

Certified to BS 4514 and EN1329, our soil and vent systems and accessories together make up one of the most comprehensive ranges available to the domestic developer. It includes ring seal and solvent weld options, plus a wide range of air admittance valves, fire protection sleeves, pan connectors, fixings and ancillaries. Everything you need for quick, easy installation and trouble free performance.

## Waste systems

Our waste water management products are available in either ABS or MuPVC with solvent weld joints, or push-fit and compression jointing options. A total of four different ranges in all. They are supported by a wide selection of traps and overflow products to provide a totally adaptable solution.

## Rainwater systems

A choice of nine different guttering types and downpipe profiles to suit the aesthetic demands and flow capacity requirements of your project. Manufactured in PVCu to British Standard or BBA 4576 with a full range of fixings and accessories.



TYPE	DESCRIPTION	SIZE	COLOUR	OPTIONS	ACCREDITATION
SOIL & VENT	Soil pipe, fittings and accessories	82mm 110mm 160mm	4 colour options	Ring seal joint. Solvent weld joint.	EN1329-1 (BS4514:2001)
	Pan connectors	110mm	White	Quick-fit rubber joint. Solvent weld joint.	BS6527
	Air admittance valves		4 colour options		BBA approved
WASTE	Push-fit waste pipe and fittings	32mm 40mm 50mm	4 colour options		EN1451-1
	Universal compression waste	32mm 40mm	White	Fittings accept both plastic and copper tube.	
	Solvent weld waste - ABS	32mm 40mm 50mm	4 colour options		EN1455-1
	System 2000 solvent weld waste - MuPVC	32mm 40mm 50mm	3 colour options		EN1329-1
	Overflow	21.5mm	2 colour options	Both push-fit and solvent weld jointing options.	
	Water seal and waste water traps	32 mm 40mm	White (Limited chrome finish available)	38 & 75mm water seal options. Anti-vacuum Mechanical sealing connections.	BS3943
RAINWATER	Gutter and down pipe systems	75mm 112mm 117mm 130mm 150mm	5 colour options	9 different gutter profiles. 5 different downpipe profiles. Ancillaries including rainwater diverters.	BS4575 (half round profiles) and BBA for remaining profiles

For more information visit [www.polypipe.com](http://www.polypipe.com)

# Below Ground Drainage Systems

A comprehensive range of durable, plastic piping solutions for drainage, sewerage and cable protection that integrates seamlessly with our above ground drainage products

## Drainage systems

Carrying all the accreditations and approvals you would expect from the UK's leading plastic piping manufacturer, our below ground drainage systems offer a flexibility and strength that makes them the perfect alternative to clay or concrete. They are available in a range of sizes and include all bends, junctions, gullies, chambers reducers, adaptors and couplers you need to fabricate a complete underground drainage solution.



## Sewer systems

The versatile PVC system for adoptable surface, foul and combined sewers, Polysewer meets all water industry specifications for new sewer pipes. Its flexible construction makes it resistant to leaks even under heavy loads and settlement.

## Cable protection systems

An innovator in cable protection technology, Polypipe manufacture the most comprehensive range of cable protection products in the UK.

TYPE	DESCRIPTION	SIZE	OPTIONS	ACCREDITATION
DRAINAGE	Around the house drainage system	110mm 160mm	Socketed or PE. Perforated or solid wall options	EN1401-1 (BS4660:2000)
	Twin wall surface water drainage	150mm 225mm 300mm	Comprehensive range of fittings and gullies. Twin wall construction with a smooth bore. Perforated and solid wall options.	BBA
	Land Drain	60mm 80mm 100mm 160mm	25m, 50m and 100m coil length options. Range of couplings and junctions in all sizes.	BS4962
SEWER SYSTEMS	Polysewer and Ridgisewer structured wall sewer systems	150 - 600mm	Socketed or PE	WIS 4-35-01
	Sewerdrain solid wall sewer system	200mm 250mm 315mm	Perforated or solid wall options	EN1401-1 (BS4660:2000)
*CABLE PROTECTION	Ridgiduct	94mm 100mm 125mm 150mm	A range of colour options available, compliant with National Joint Utilities Groups guidelines. Available in 2m, 3m and 6m lengths, with full range of long radius bends to compliment the system.	ENATS 12-24, BBA
	General Purpose Duct	2, 3, 4 & 6"	Solid wall PVCu construction. Full range of couplings and fittings in all sizes.	
	Ridgicoil	50mm 63mm 110mm	50m coil lengths	BSEN 50086-2-4 BBA
	Polyduct	38mm 50mm		
	Gullies	300 x 600mm 450 x 750mm 450 x 900mm	Corrugated for maximum strength. Silt buckets and cast iron grating available.	

\* The products extend to include a range of cable protection ducting for power, gas and lighting. For more information visit [www.polypipe.com](http://www.polypipe.com)



# Water Supply Systems

## COLD WATER SUPPLY SYSTEMS

### Polyfast

Manufactured in durable polypropylene, Polyfast is suitable for all potable mains water applications. Easy to handle on-site, it offers a secure compression fittings for quick installation, plus excellent flow rates and resistance to chemicals and abrasion. Like all Polypipe products, Polyfast is certified to BS EN ISO 9002 for quality and reliability.

### Polyguard

In brownfield developments where traces of organic, inorganic, corrosive or toxic pollutants may still remain below ground, Polyguard offers safety and security from the threat of water contamination. A strong, impact and abrasion resistant pipe, it can be relied on to protect the quality and integrity of mains drinking water in all ground conditions.



### Reclaimed water supply pipe

As water re-use systems become more popular with developers and home buyers, the need to identify and differentiate harvested and fresh water supplies has become paramount. Polypipe's Reclaimed Water Supply Pipe provides contractors with a clear, colour coded indication that it is carrying harvested and therefore non-potable rainwater, rather than fresh mains water. This helps prevent cross connection during initial development and during any further work on-site in the future. Reclaimed Water Pipes are supplied with the Rainstream re-use system and meet all the requirements of the British Code of Practice for rainwater harvesting.

## THERMAL SUPPLY SYSTEMS

### Pre-insulated pipes

Suitable for single plot applications such as remote boilers or heat pumps where exposure to extreme cold is a threat, Polypipe Pre-Insulated piping offers ease of installation, peace of mind and flawless long-term performance. It consists of twin flow and return inner pipes sealed in flexible foam insulation and encased in a durable double wall HDPE outer layer. Light weight and easy to handle, it comes with a full modular connection kit for fast, easy fitting.



### Geothermal piping systems

Geothermal heating systems exploit the difference between ambient air temperature and the temperature below ground to extract energy for heating or cooling homes. This energy is transferred by pumping water through a subsurface pipe known as a geothermal 'loop'. Polypipe Geothermal Piping is formed from strong yet flexible polyethylene, rated to operate at the internal and external pressures encountered in a typical geothermal solution to make it a perfect choice for domestic loop systems.

TYPE	DESCRIPTION	SIZE	COLOUR	OPTIONS	ACCREDITATION
COLD WATER SUPPLY SYSTEMS	MDPE cold water supply pipe	20, 25, 32, 40, 50 and 63mm	Blue or black	Variety of coil lengths from 25m to 150m.	BSEN12201-2
	Polyfast polyethylene compression fittings	20, 25, 32, 40, 50 and 63mm	Blue and black	Full range of PE fittings, including transmissions to alternative materials.	WIS 4-32-11
	Polyguard water supply pipe	25, 32 and 63mm	Blue with brown stripe	Choice of either GM or plastic fittings.	WIS 4-32-19
	Reclaimed water supply pipe	25 and 32mm	Black with green stripes	25mm in 25mt and 50mt coils and 32mm in 15mt, 25mt and 50mt coils.	Meets WRAS guidelines

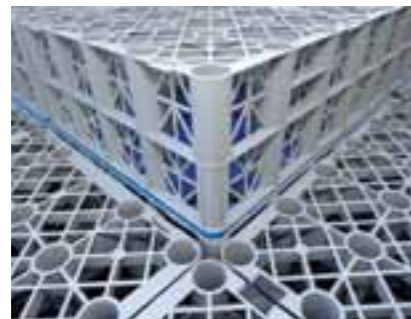
THERMAL SUPPLY SYSTEMS	Geothermal piping systems	32 and 40mm	Black	Variety of coil lengths.	EN12201-2
	Pre insulated piping systems	25mm and 32mm	Black	Standard coil lengths of 10, 15 & 20m available 'off the shelf'.	DIN 16892/16893, yellow oxygen barrier DIN4726

For more information visit [www.polypipe.com](http://www.polypipe.com)

# Water Management Solutions

Polypipe stormwater management solutions offer project planners the means to reduce flood risk in new residential developments with a range of SUDS products

As demand for housing grows and more and more countryside is given over to residential development, the amount of surface water running off paved areas and roads increases. The Code for Sustainable Homes aims to make run-off from all new developments at least equal to its predevelopment rates. Polypipe's product and system solutions to help you achieve this include:



## Polystorm

Light weight modular cells providing an efficient and sustainable method of collecting and storing large volumes of water prior to soakaway or release into drains or sewers.

## Rainstream

A complete water storage and filtration system to collect rainfall run-off for re-use in gardens, washing machines, dishwashers and WCs.

## Ridgistorm-XL

Large diameter pipes for adoptable drainage or storage offering strength and flexibility under the heaviest loads.

Polypipe also manufacture attenuation products for the controlled release of water from SUDS systems into watercourses and a range of water treatment solutions to help reduce surface and groundwater pollution in accordance with UK and EU laws and directives.



TYPE	DESCRIPTION	SIZE	COLOUR	OPTIONS	ACCREDITATION
RIDGISTORM-XL	Large diameter pipe system for surface water, foul water and attenuation applications.	750mm 900mm 1200mm 1500mm 1800mm 2100mm	Black with blue inner wall	Full range of standard and bespoke fittings available for off-site construction.	WRC approved Water company approval for Section 104 and Capital Works projects, BBA
POLYSTORM	Modular geocellular structures for use as both attenuation and soakaway SUDS solutions.	PSM1, PSM1-A and PSM2 1,000mm L x 500mm W x 400mm D and PSM3 1,000mm L x 500mm W x 210mm D	PSM1 Grey, PSM1-A Black with grey central band, PSM2 Black and PSM3 Grey (with blue lid)	Three variants of Polystorm are available with differing loading capabilities to suit project specific requirements.  All three can be utilised as a hybrid solution to value engineer the scheme.  PSM1 (and PSM1-A 100% recycled material) 40 tonne loading for trafficked applications.  PSM2 20 tonne loading for non-trafficked applications.  PSM3 80 tonne loading for deeper and hybrid installations.	BBA
RAINSTREAM	Rainwater re-use system allowing stored rainwater to be utilised in and around the home for toilet flushing, garden watering, clothes and vehicle washing.	2,000 ltrs to 300,000 ltr storage tanks available	Black	2,000lts, 3,000lts, 4,000lts and 5,000lts storage capacities.  Available as gravity fed or pressurised system for individual properties or as a manifold system servicing more than one household.	BS8515 and CfSH compliant
STORM-X4	Treatment filter which improves the quality of surface water discharge from roofs, car parks and roads.			Can be supplied for installation into a concrete chamber or pre-installed into a bespoke plastic chamber which provides the benefits of off-site construction.	
STORMCHECK	Vortex flow control device housed within a plastic chamber to allow surface water discharge from site within controlled limits.	Typically housed within 1050mm or 1200mm chamber but available in other sizes	Black	Available in manual, bypass and non-bypass versions with optional drain down system to ease maintenance.	BBA (chamber only)

For more information visit [www.polypipe.com](http://www.polypipe.com)



# Plastic Plumbing Systems

Addressing a broad range of requirements for domestic plumbing, Polypipe has developed three different plumbing systems that mean you'll always be able to specify the right solution for the job.



With no specialist welding or soldering skills needed, plastic plumbing systems offer safe, easy, almost instant jointing with no mess and no costly consumables and because the resale value of plastic is nothing like that of copper, are much less likely to be targeted by thieves.

## Polyplumb

The quick and permanent integrated plumbing solution, Polyplumb consists of durable polybutylene pipes and an easy push-fit connection. Suitable for cold and hot flow and for central heating, Polyplumb has over many years, more than proven its worth.

## Polyfit

When you need an easily installed and equally easily demounted system, Polyfit is it. Combining with white polybutylene pipe in a truly flexible, yet highly secure solution, Polyfit's 'push-click' jointing is simplicity in itself.

## Polysure

A complete range of radial press fit fittings and the first available in UK sizes for use with Polyplumb or Polyfit pipes in domestic applications. Polysure combines the benefits of flexible polybutylene pipe systems with the latest press fit connection technology.



TYPE	DESCRIPTION	SIZE	COLOUR	OPTIONS	ACCREDITATION
POLYPLUMB	Permanent Push-fit Plumbing	10mm 15mm 22mm 28mm	Grey	Standard & barrier pipe with a comprehensive range of fittings and accessories.	BS7291 Part 1 & 2
POLYFIT	Demountable Push-fit Plumbing	10mm 15mm 22mm 28mm	White	Barrier pipe with a comprehensive range of fittings and accessories.	BS7291 Part 1 & 2
POLYSURE	Permanent Press-fit Plumbing	10mm 15mm 22mm 28mm	Metallic silver/brass	Standard & barrier pipe with a comprehensive range of fittings.	BS7291 Part 1 & 2

For more information visit [www.polypipe.com](http://www.polypipe.com)

## Pipe technology

At the heart of our systems is our commitment to polybutylene pipe. Unlike a number of other plumbing manufacturers, we choose polybutylene to create the most flexible and efficient pipes and plumbing systems available. Polybutylene pipe is ideal for both hot and cold water plumbing and heating systems, offering exceptional durability and long-term performance, which has seen it become the preferred material choice for today's building projects.



# Floor Heating Systems

As the UK's largest manufacturer of floor heating products, Polypipe can provide dedicated heating solutions to suit your exact project requirements



Polypipe has the widest available range of underfloor heating systems with a product available for every conceivable floor type or residential heating project. With Polypipe, underfloor heating is not restricted to new build developments or self build projects. Our unique Overlay™ system is particularly well suited to single room projects such as kitchens, bathrooms, conservatories, extensions and loft conversions. Polypipe Modular Heating Panels (MHP) were developed to provide an innovative and practical solution to installing underfloor heating into upper floors.

## UFCH

Subsurface radiant heating systems forming part of the building structure in various floor constructions. These systems provide efficient heating as low temperature heating water is passed through the pipe embedding in or fixed to the building structure. The floor constructions covered are solid, floating and suspended floors.

## Overlay

Overlay is a unique low profile floor heating system ideal for both renovation and new build projects. Installed over the existing floor and only 18mm in depth, Overlay™ allows underfloor heating to be installed where traditional underfloor systems would either require expensive excavation or would require the floor to be raised to an unacceptable level. The Overlay™ system is available in 2 panel types to allow for installation to all build types and floor coverings.

## MHP

Modular Heating Panels are an exciting new product concept from Polypipe that enable quick and simple installation of underfloor heating into suspended floors in both new build and renovation projects.

As the name suggests, a Modular Heating Panel (MHP) is a pre-configured solution, where all of the floor heating system components are supplied fitted within complete panels, which are simply fitted and connected together on-site. Thanks to MHP it is now possible to fit panels quickly into the existing joist voids and connect them to a standard heat source. MHP works with both traditional and engineered joists and can be fitted from above or below.

## Control systems

Precise control of heat output and flow rates is critical to the performance of low emission heating systems for maximum comfort and minimum energy consumption. Polypipe have a wide range of water and room temperature control solutions to ensure every heating system delivers optimum efficient in all conditions.



TYPE	DESCRIPTION	SIZE	OPTIONS	ACCREDITATION
SOLID FLOORS	Panel based system for screeded floors.	1 x 1.2m panel for all floor sizes	For use with 15mm and 18mm pipe system	BBA certification on systems and components Pipe to BS 7991 class S
FLOATING FLOORS	Panel based light weight floating floor system.	1.2 x 1.2m panel for all floor sizes.	For use with 15mm and 18mm pipe system	BBA certification on systems and components Pipe to BS 7991 class S
SUSPENDED FLOORS	Spreader plate system for joisted and acoustic floors.	1m x 450mm long panel or all floor sizes	For use with 15mm and 18mm pipe system	BBA certification on systems and components Pipe to BS 7991 class S
MODULAR HEATING PANELS	Modular system for composite suspended floors.	330mm , 380mm and 490mm Wide x 1.3m and 2.0m length		BBA certification on systems and components Pipe to BS 7991 class S
OVERLAY	Overfloor low profile system for heavyweight floor coverings.	12mm pipe system x 18mm depth		BBA certification on systems and components Pipe to BS 7991 class S
OVERLAY LITE	Overfloor low profile system for lightweight floor coverings.	12mm pipe system x 18mm depth		BBA certification on systems and components Pipe to BS 7991 class S
MANIFOLDS	Flow and return manifolds.	190 to 850mm length (2 to 12 Port)	15mm and 18mm pipe options	BBA certification on systems and components Pipe to BS 7991 class S
TEMPERATURE CONTROL	Water temperature control and distribution.	Up to 150m <sup>2</sup>	A Rated or Standard	BBA certification on systems and components Pipe to BS 7991 class S
ROOM CONTROLS	Programmable room control.	All systems	Wired and RF	BBA certification on systems and components Pipe to BS 7991 class S

See Polypipe's System and Product Selector for exact product dimensions or visit [www.polypipe.com](http://www.polypipe.com)

# Ventilation Systems

Polypipe offers a wide range of high quality domestic ventilation systems that combines energy-efficient performance with precise comfort and climate control technology

Taking a 'whole house' approach to ventilation solutions design, our integrated systems including mechanical ventilation with heat recovery are designed to help developers achieve higher levels under the Code for Sustainable Homes and the best possible SAP ratings. Working with distribution partners and project planners, we deliver not only market leading products, but support services that include training, on-line specification planning, an installer loyalty programme, telephone advice and even site-based technical assistance.

## Mechanical ventilation with heat recovery (MVHR)

Polypipe MVHR appliances warm fresh air drawn into the home using the heat from stale air extracted from bathrooms and kitchens providing an energy efficient ventilation system.

## Intermittent extract fans

including low Watt versions to suit all applications. Both Silavent and Domus brands have a superb reputation for reliability and ease of installation.

## Auxiliary fan controls

Designed for fans requiring remote switch operation. All remote controllers can be flush or surface mounted using a standard single pattress box.



## Mechanical extract ventilation (MEV)

Distributed through Domus duct systems, our MEV appliances provide discreet constant low level ventilation through a central Silavent appliance.

## Branch duct systems

Efficient airflow is dependant on duct size, high surface finish and air-tight distribution. To achieve this, consistent profiles, tight extrusion tolerances and accurate mouldings are essential. Polypipe consider quality of utmost importance and this is reflected in our market leading Domus duct systems.

## Radial duct system

An innovative and flexible whole house air distribution system for use with Polypipe MEV or MVHR appliances. The Domus Radial duct system is a clever plug and play application using a manifold (air distribution box), designed to service up to 12 rooms with flexible semi-rigid duct running to each individual room.



TYPE	DESCRIPTION	SIZE	COLOUR	OPTIONS	ACCREDITATION
MECHANICAL VENTILATION WITH HEAT RECOVERY (MVHR)	Continuous balanced ventilation with the added benefit of heat recovery, efficiently combining supply and extract ventilation in one system	HR01W - 598 x 435 x 285mm Ø 125/100 HR01L, HR02L & HR03L - 840 X 450 X 430mm Ø 150/125	White	Appliances available to support up to 7 wet rooms. Kitchen cupboard and loft variants available, with summer bypass options. Includes a range of tamper proof controls, for optimum performance.	SAP Appendix Q registered and Energy Saving Trust Best Practice Compliant. Exceeds the minimum requirements of Building Regulations.
MECHANICAL EXTRACT VENTILATION (MEV)	Provide discreet constant low level ventilation through a central appliance	Triplevent - 337 x 294 x 157mm Ø 100 Powercube - 345 x 280 x 335mm Ø 150 Quadvent 600 & 750 - 460 x 280 x 335mm Ø 100 & 150	White	Appliances available to support up to 4 rooms. Both 2 and 4 speed appliance options available.	Enables compliance with Building Regulations.
INTERMITTENT EXTRACT FANS	Designed to provide local rapid extraction and suitable for all applications.	Range includes Silavent fans suitable for Ø 100-150mm	White	Available in axial, mixed flow and centrifugal versions. Range includes low Watt centrifugal and Mayfair plug-in fans for refurbishment applications where existing mains versions need to be replaced. Models can include low voltage, twin speed dMEV, pull cord, timer, humidistat and PIR features.	Enables compliance with Building Regulations.
AUXILIARY FAN CONTROLS	Designed for fans with remote switch operation.	89 x 89 x 54mm	White	Controls available for overrun timer, humidistat, two speed switch and PIR fans.	Comply with relevant EMC directives.
BRANCH DUCT SYSTEMS	Enables the distribution of air throughout a home and are designed to work seamlessly in conjunction with Polypipe's central ventilation systems.	110 x 54mm 204 x 60mm 220 x 90mm 234 x 29mm 308 x 29mm Ø 100mm Ø 125mm Ø 150mm	Ducting, connectors and hose - white. FireBrake - Red. Duct insulation sheet - Silver. Inlets/outlets and duct terminations available in either white, brown, cotswold or terracotta*. *Colour options vary.	Available in 8 different profiles . Range also includes duct installation, integrated fire stopping & sound attenuation components.	FireBrake provides 2 hours of fire protection and has been tested by BRE to BS476/ EN 1366-3 and LABC system independently approved Domus ducting enables compliance with Building Regulations.
RADIAL DUCT SYSTEM	Whole house air distribution system, designed to service up to 12 rooms using a manifold box with flexible semi-rigid duct running to each individual room.	Ø125mm or Ø150mm options - depending on size of property	System consists of blue, light grey, dark grey, white, black and brown components	Can be used with either MEV and MVHR options Radial duct system packs to suit properties up to 300m <sup>2</sup> (small MEV), 400m <sup>2</sup> (large MEV) and 225m <sup>2</sup> (MVHR).	Enables compliance with Building Regulations.

See Polypipe's System and Product Selector for exact product dimensions or visit [www.polypipe.com/ventilation](http://www.polypipe.com/ventilation)

# Technical Expertise & Support

Polypipe offers a wide range of high quality residential drainage, water supply, water management solutions, plastic plumbing and ventilation systems



## Planning

In recent years, complex legislation such as the EU Water Framework Directive and guidelines like the Code for Sustainable Homes have all increased the complexity of the planning process. Our teams have the technical and regulatory knowledge to help you meet the broad range of demands needed for project approval and will advise you at every stage on satisfying their requirements.

## Design

We offer an end-to-end design service, drawing on our full range of in-house facilities and the in-depth knowledge of our designers, specialists and engineers to help you achieve the 'whole house' performance you're aiming for.

## Technical and on-site support

Our full project co-ordination services will help you manage and prioritise your on-site resources to deliver your water supply, water management, heating and ventilation objectives economically and effectively.

## In-house bespoke fabrication

Polypipe is the only UK manufacturer to operate an end-to-end, in-house system fabrication service for water management, drainage and ventilation solutions, giving you all the benefits of made to measure fit and performance.

## On-site maintenance and guidance

Polypipe products utilise durable plastics and state of the art technology for 'fit and forget' functionality. For those products that have a nominal maintenance requirement, however, we offer ongoing maintenance support and technical advice from system experts.

## Nationwide merchant network

The national network of Polypipe merchants is essential to our high levels of customer service. Not just resellers, but genuine partners in the Polypipe supply chain, they ensure products you need are available, whenever and wherever you need them. While our 150 strong fleet of trucks and 300 trailers is on the road around the clock to maintain stock levels and service the needs of our customers right across the country.

## Sustainable approach

Polypipe take sustainability seriously and are delighted to have become the first plastic piping systems company to be awarded the coveted Carbon Trust Standard.



Lean manufacturing techniques and our approach to recycling all manufacturing waste, are at the heart of our sustainable manufacturing processes, whilst we also have the capacity to re-use off cuts of our products if they are returned from site.

Indeed, plastic is itself a sustainable product - lighter and easier to handle and transport, it requires less energy to handle and transport and less energy to be converted from polymer to finished product than traditional materials.

Furthermore, our product portfolio includes many products designed to aid the construction of a more sustainable built environment, such as rainwater harvesting and underfloor heating.

# Literature

## Product Literature



## Solutions Literature



**WMS Residential**  
01709 770000

**Carbon Efficient Solutions**  
01709 770000

All literature available at:  
[www.toolbox.polypipe.com](http://www.toolbox.polypipe.com)

# Polypipe enabling sustainable building technology

Polypipe provides plastic piping systems that enable the effective installation and performance of sustainable building technology, meeting the twin global challenges of carbon reduction and water management

## CARBON EFFICIENT SOLUTIONS 'SUSTAINABLE INDOOR ENVIRONMENTS'

Ever stricter building regulations and ever more environmentally conscious customers are driving the demand for greener building products and technologies. Polypipe fulfils that demand with a full range of systems that enable collection, transmission, emission and control in heating, ventilation and cooling systems.

## WATER MANAGEMENT SOLUTIONS 'ROOF TO RIVER'

Offering a comprehensive range of standalone and modular SUDS products, rainwater harvesting and surface water treatment solutions plus legislative and technical support services, Polypipe Water Management Solutions address the surface water requirements of every construction and civil engineering project.



## Market Sector Literature

Additional market sector literature is available please visit [www.polypipe.com](http://www.polypipe.com) or contact the telephone numbers appearing under each brochure.



**Commercial**  
01622 795200

**Civils and Infrastructure**  
01509 615100

# Sector Focus

Our product systems respond directly to sector-specific requirements thanks to focused technical and development teams with hands on expertise in the following areas

## RESIDENTIAL

Polypipe offers the broadest range of residential product and service solutions for both new build and RMI applications, as well as innovative solutions in response to legislative and industry targets for more sustainable housing.

## CIVILS AND INFRASTRUCTURE

Delivering performance and sustainability, Polypipe's surface water drainage and cable management systems, supported by our in-house fabrications team, offer civils and infrastructure project planners a complete suite of solutions.

## COMMERCIAL

Major commercial projects from car parks and high rise office blocks to hospitals, educational premises and shopping centres have all benefited from Polypipe's range of value engineered products and comprehensive service support.

All descriptions and illustrations in this publication are intended for guidance only and shall not constitute a 'sale by description'. All dimensions given are nominal and Polypipe may modify and change the information, products and specifications from time to time for a variety of reasons, without prior notice. The information in this Brochure is provided 'as is' on September 2011. Updates will not be issued automatically. This information is not intended to have any legal effect, whether by way of advice, representation or warranty (express or implied). We accept no liability whatsoever (to the extent permitted by law) if you place any reliance on this publication and you must do so at your own risk. All rights reserved. Copyright in this publication belongs to Polypipe and all such copyright may not be used, sold, copied or reproduced in whole or part in any manner in any media to any person without prior consent. Polypipe is a registered trademark of Polypipe. All Polypipe products are protected by Design Right under CDPA 1988. Copyright © 2011 Polypipe. All rights reserved.

## Residential



### Polypipe Ventilation

Sandall Stones Road  
Kirk Sandall Industrial Estate  
Kirk Sandall  
Doncaster  
DN3 1QR  
United Kingdom  
Tel: +44 (0) 8443 715523  
Fax: +44 (0) 8443 715524

### Polypipe Ulster

Dromore Rd  
Lurgan Craigavon  
Co. Armagh  
BT66 7HL  
United Kingdom  
Tel: +44 (0)28 38 881270  
Fax: +44 (0)28 38 882344

### Polypipe Building Products

2410 London Road  
Mount Vernon  
Glasgow  
G32 8XZ  
United Kingdom  
Tel: +44 (0)141 778 8822  
Fax: +44 (0)141 778 2703

### Polypipe Building Products

Broomhouse Lane  
Edlington  
Doncaster  
DN12 1ES  
United Kingdom  
Tel: +44 (0)1709 770000  
Fax: +44 (0)1709 770001



Printed on 100% recyclable chlorine-free paper. All inks used on this brochure are vegetable based.